

MONTHLY MEMBERSHIP PROGRESS REPORT

LOCATION FLORIDA

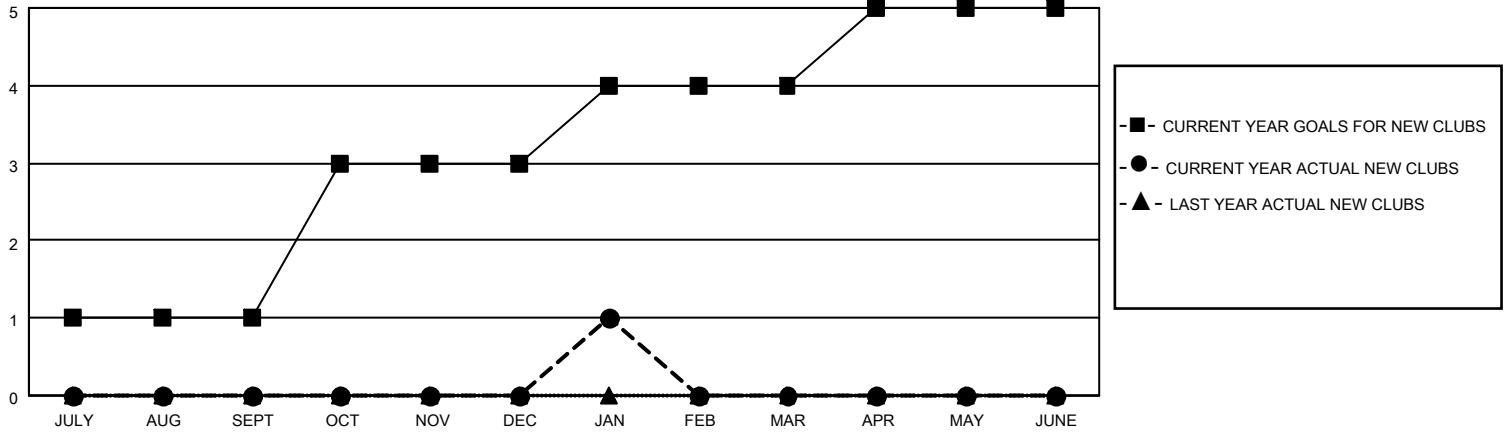
District 35 I

Results as of: 1/31/2022

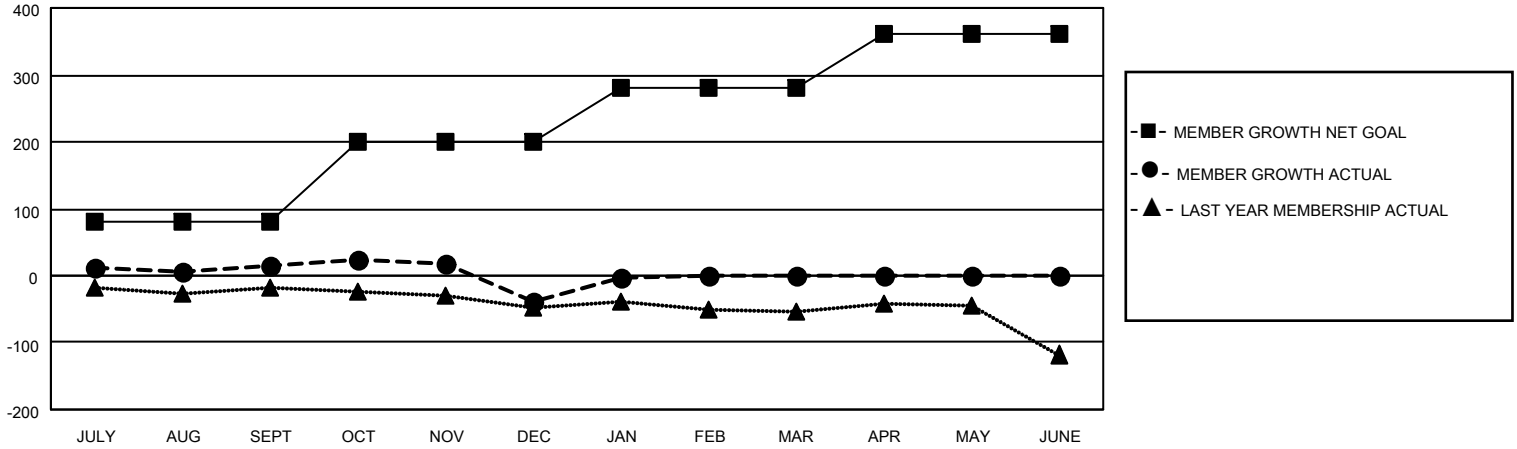
Clubs			
RESULTS FOR 2021-2022			
QUARTER	NEW CLUB GOAL	NEW CLUBS	DROPPED CLUBS
JULY/AUG/SEPT	1	0	0
OCT/NOV/DEC	2	0	2
JAN/FEB/MAR	1	1	1
APR/MAY/JUNE	1	0	0

Members			
RESULTS FOR 2021-2022			
QUARTER	MEMBER GROWTH NET GOAL	MEMBER GROWTH ACTUAL	DROPPED MEMBERS ACTUAL (including transfers)
JULY/AUG/SEPT	80	56	33
OCT/NOV/DEC	120	47	90
JAN/FEB/MAR	80	57	17
APR/MAY/JUNE	80	0	0

GOALS AND ACTUAL NEW CLUBS CUMULATIVE



GOALS AND ACTUAL MEMBERS CUMULATIVE



DROPPED CLUBS: 3

28 CLUBS OF 47 ADDED 1 OR MORE NEW MEMBERS

GENDER DISTRIBUTION

MALE	591 (51.17%)
FEMALE	564 (48.83%)
NON BINARY	0 (0.00%)
PREFER NOT TO ANSWER	0 (0.00%)

DROPPED MEMBERS

[CLICK HERE FOR CUMULATIVE MEMBERSHIP DATA](#)

DECEASED	8
CLUB CANCELLED	35
OTHER	97
TOTAL	140

TOTAL FAMILY UNIT MEMBERS	316
FAMILY MEMBERS PAYING HALF DUES	161